

Atlanta Coalition of Performing Arts

Celebrating 25 years of service to greater Atlanta's performing arts community.

Dedicated to programs and services that provide a nurturing environment for the growth of the performing arts, and advance the role they play within the fabric of our society.

AtlantaPerforms.com

voted best "Arts Website" by Creative Loafing's,
2009 Best Of Atlanta, Reader's Choice Award

AtlantaPerforms.com is the leading online resource for information on the greater Atlanta performing arts scene. Among site highlights are member organization directories by several breakout categories, comprehensive ShowGuide, and the weekly Stage Stories podcast. As of August 2008, the site averages 39,000+ monthly visitors.



Advertising Package Rates



Ad Submittal Guidelines

- Email ads to adsales@atlantaperforms.com
- Accepted format: JPG
- Ad design is available for an additional fee, starting at \$150.

Benefits of Advertising

- Visibility among potential customers
- Shows your support of our arts community
- Showcase your business or services in front of an audience of 39,000+ per month
- Traffic to advertiser's website - each ad is linked to company's website

Package	1 month	6 months	Ad size
AtlantaPerforms.com home page ad AtlanTIX email (16,000 unique addresses) Internal page ad on AtlantaPerforms.com	\$1,000	\$3,000	(160 x 200 pixels)
AtlantaPerforms.com home page ad Internal page ad on AtlantaPerforms.com	\$500	\$1,500	(160 x 200 pixels)
AtlantaPerforms.com home page ad	\$250	\$1,000	(160 x 200 pixels)

Ad Placement Example: ATL Noodles Restaurant

(with link to company website)



Atlanta Performs

Theatre • Dance • Music • Film Arts

- Home
- Companies
- Discount Tickets
- Gift Tix
- Volunteer
- Sponsor
- Support
- Sign Up
- About Us

Current Shows

- By Show Title
- By City
- By Show Type
- By Venue
- By Company

Events & Exhibits

RSS & ICalendar Feeds

Podcasts

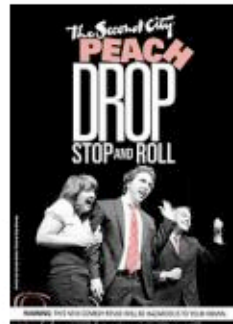
Great Links



Shows Closing This Week - Don't Miss Them!



Christmas with Atlanta Sacred Choral
[More Information](#)



The Second City: Peach Drop, Stop and Roll
[More Information](#)



Big Band Christmas with Joe Gransden
[More Information](#)



Emory Guitar Ensemble, Brian Lockett, director
[More Information](#)



Candlelight On the Square
[More Information](#)



The Last Dragon on Earth
[More Information](#)

SEARCH THE SHOW GUIDE

< DECEMBER 2009 >

S	M	T	W	T	F	S
29	30	01	02	03	04	05
06	07	08	09	10	11	12
13	14	15	16	17	18	19
20	21	22	23	24	25	26
27	28	29	30	31	01	02

- Or search by month -
- [Dec](#) • [Jan](#) • [Feb](#) • [Mar](#)
- Or search by keyword -

[advanced search](#)

ACCOUNT LOGIN

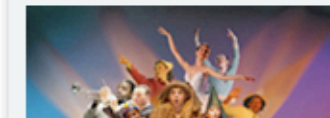
LOGIN

PASSWORD

[Forgot password?](#)

Atl Noodles

local asian cuisine
404.222.4444



Ad Placement Example: Frank's Steakhouse

(with link to company website)

- By Company
- Events & Exhibits
- RSS & ICalendar Feeds
- Podcasts
- Great Links



Celebrate 25 years of serving arts lovers and artists with your \$25 gift.

[Give today!](#)



End Time 8:00 pm
Price \$5.00 - \$10.00
Description GONE FOR A SOLDIER: VOICES OF THE AMERICAN CIVIL WAR dramatizes the historical events that took place in Georgia during the American Civil War. Drawn from letters, news items, first person narratives and campaign histories, GONE FOR A SOLDIER portrays our nation's tragic civil war through the experiences of two young friends who fought on separate sides of the conflict.



The young protagonists are only 15 at the start of the play which adds a personal resonance and appeal for young audiences. The geographical detail of the Georgia campaign and the familiarity of such names as Peachtree Street, Stone Mountain, Kennesaw and Decatur remind today's audience of the proximity of that great struggle to those of us living in a very different Atlanta today.

Location **The Dallas Theater**
208 Main Street
Dallas, GA, 30132
Box Office 770-445-5180
Purchase Tickets [Click Here](#)
Company Website <http://www.gypsytheatrecompany.biz>
Suitability Family Friendly

Other Performance Times for This Show

[Show all other times for this show](#)

Nearby Restaurants



2007 - 2008 - 2009 - 2010
- Or search by keyword -

[advanced search](#)

ACCOUNT LOGIN

LOGIN
PASSWORD

[Forgot password?](#)

